

## Concrete Ready Mix Plant Liners and Truck Parts

**Linatex® concrete batch plant liners are designed to provide producers with long-lasting protection that resists impact, abrasion, and build-up of concrete, while also offering ease of installation and reduction of costly maintenance and downtime.**

### Features and benefits

- Weld-in liners made-to-size to fit your wear applications
- Urethane liners greatly reduce concrete build-up inside concrete mixers and hoppers
- Linatex® urethane outlasts steel many times over
- Lightweight compared to steel for easy installation
- Longer wear life reduces maintenance costs
- Rubber/ceramic liners available for your toughest wear problems
- Linatex® urethane provides for easy clean-up at the end of the day
- Urethane liners have a low coefficient of friction, resulting in lower amperage draw to turn the loaded mixer

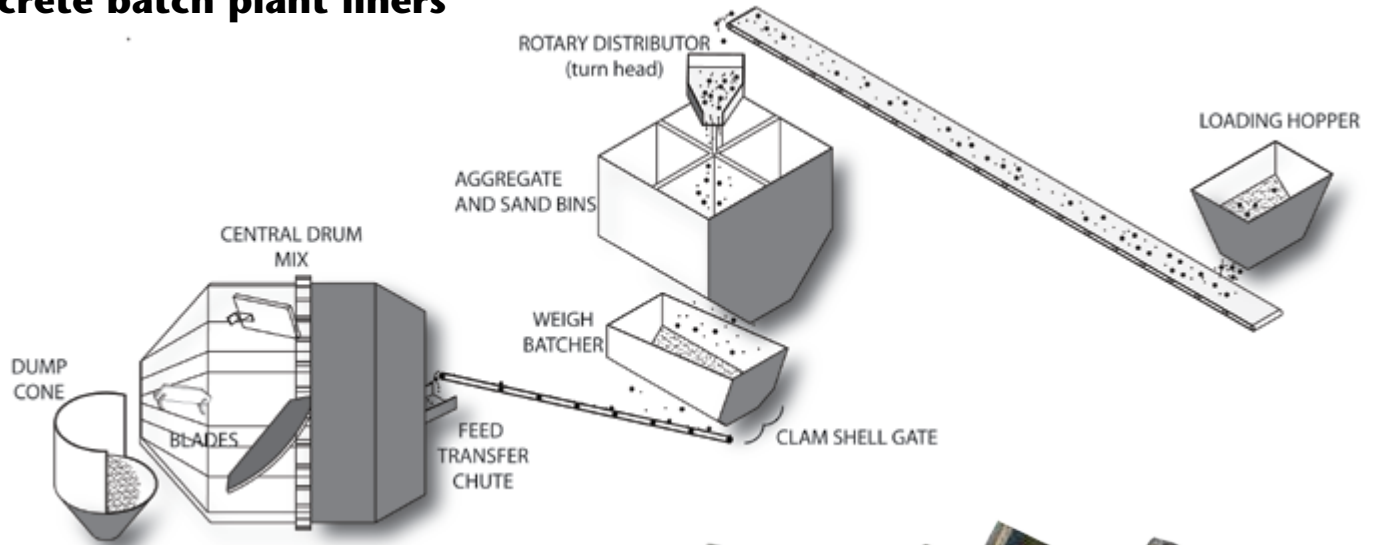


1: Drum liner

2: Truck hopper liner

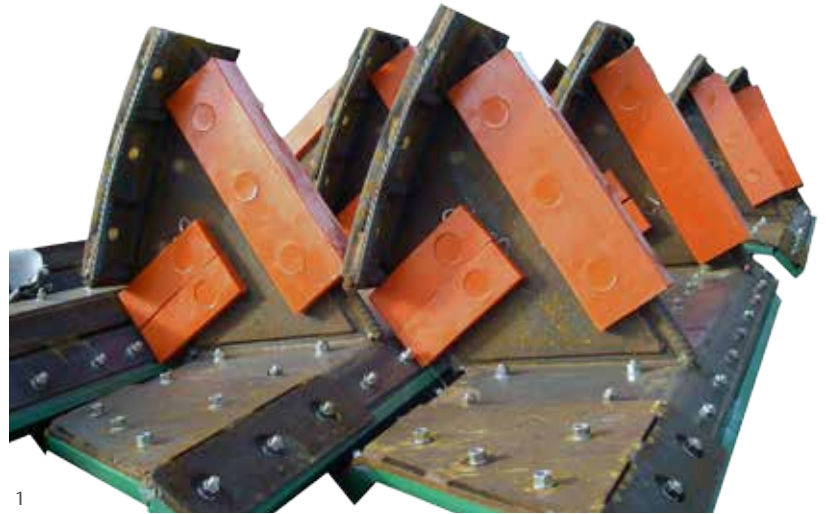
3: Wrap-around blade liner

# Concrete batch plant liners



## Recommended liner material and thickness

Material	Liner	Overall thickness
Rubber/Ceramic Linatex® Urethane Formula	Rotary distributor (turn head)	1" - 1 1/2"
	Aggregate bin	1/2"
	Sand bin	1/2"
	Weigh batcher	1/2" - 3/4"
	Drum	1"
	Blade	1"
	Dump cone	3/4"
	Loading hopper	3/4"
	Transfer chute	1"



## Plain and weldable urethane sheets

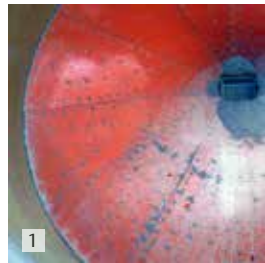
Linatex® liner material is available in standard sheet sizes of 4' X 8' and 4' X 10' or made to size. Liners can be ordered with no backing or expanded metal. Urethane coated bolts are available for 1/2" and thicker sheets. The bolts are tapered to make a snug fit into the counter bored holes. The snug fit allows the bolts to be tightened from the back without spinning.



- 1: Blade pedestal liners
- 2: Mixer blades with rubber ceramic sections for the highest wear areas
- 3: Urethane sheets and bolts
- 4: Weigh scale liner
- 5: Dump cone liner



**Linatex® will customize a cost-effective liner system to your specific requirements. Liners can be designed for all of the wear areas of your concrete production facility and are available in a variety of mounting styles including bolt-down with counter bored holes or plug welded.**



- 1: Lined aggregate bin
- 2: Lined loading bin for bottom-dump trucks
- 3: Rubber ceramic lined turnhead
- 4: Rubber concrete boot
- 5: Rubber ceramic lined diverter
- 6: Lined aggregate bin
- 7: Lined feed bin
- 8: Cement pipe protector
- 9: Lined weigh scale

## The material of choice for concrete truck parts



- 1: Drum wiper
- 2: Discharge bib/skirt
- 3: Discharge bib/skirt
- 4: Discharge chute liner

### Weir Minerals - Linatex North America

Weir Minerals Linatex - St. Croix Falls  
911 Pine Street  
St. Croix Falls, WI 54024 USA  
Toll Free: +1 800 826 6931  
Tel: +1 715 483 9611  
Fax: +1 715 483 1448

Weir Minerals Linatex - Gallatin  
1550 Airport Road  
Gallatin, TN 37066 USA  
Tel: +1 615 230 2100  
Fax: +1 615 230 2101  
[www.weirminerals.com](http://www.weirminerals.com)

Excellent  
Minerals  
Solutions

